



# **DOWN TOWN TRANSFORMATION**

**(RAMSEES-ALATABA-ALTAHREER SQUARES' ZONE)**

**SKYLINE AND HEIGHTS**

**GROUP :**

- 1.AHMED FOUAD
- 2.AHMED SARHAN
- 3.YOUMNA ELTALLY
- 4.HEBA MOHAMED
- 5.MENNA MORSY

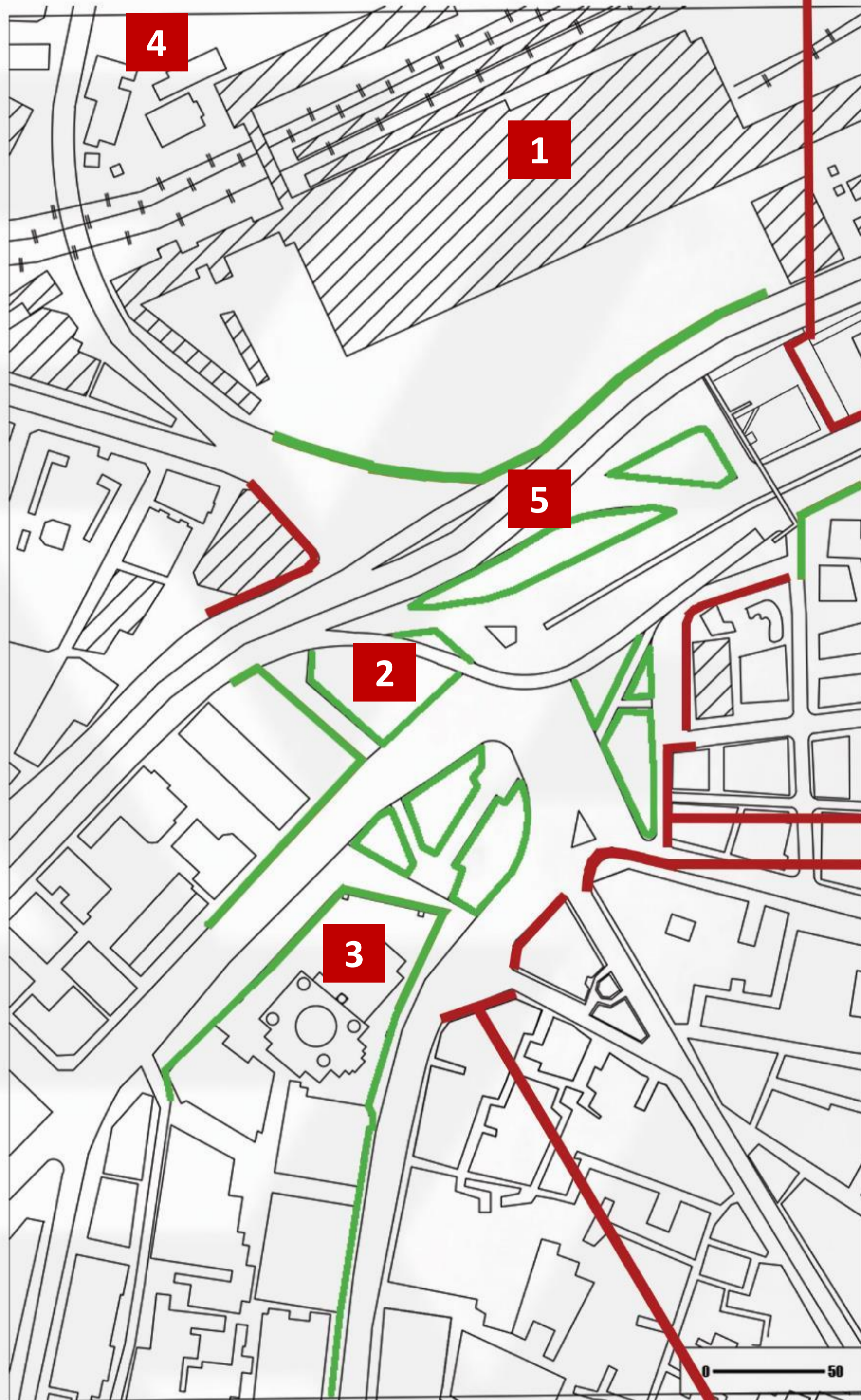
**COURSE INSTRUCTOR: DR.KAMAL MAHMOUD ELGABALAWY**

**TAs: ENG.DINA**

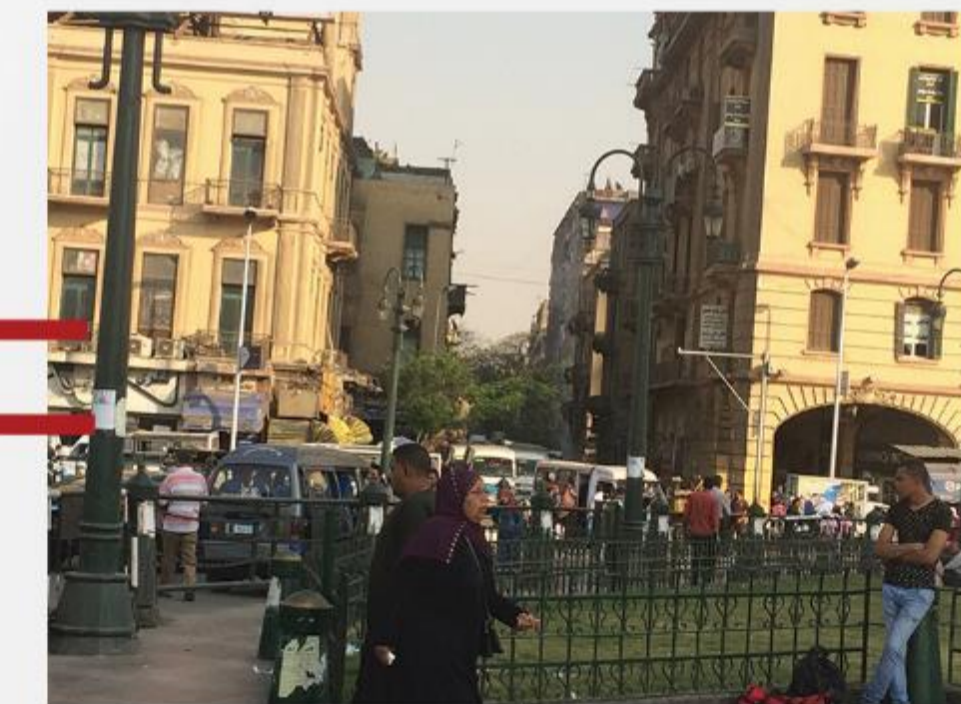
photography  
mphamed 20175  
©2008

**FALL 2018**

# ATTRACTING POINTS



buildings  
 — boundaries  
 — fences  
 — boundaries  
 ■ Important buildings



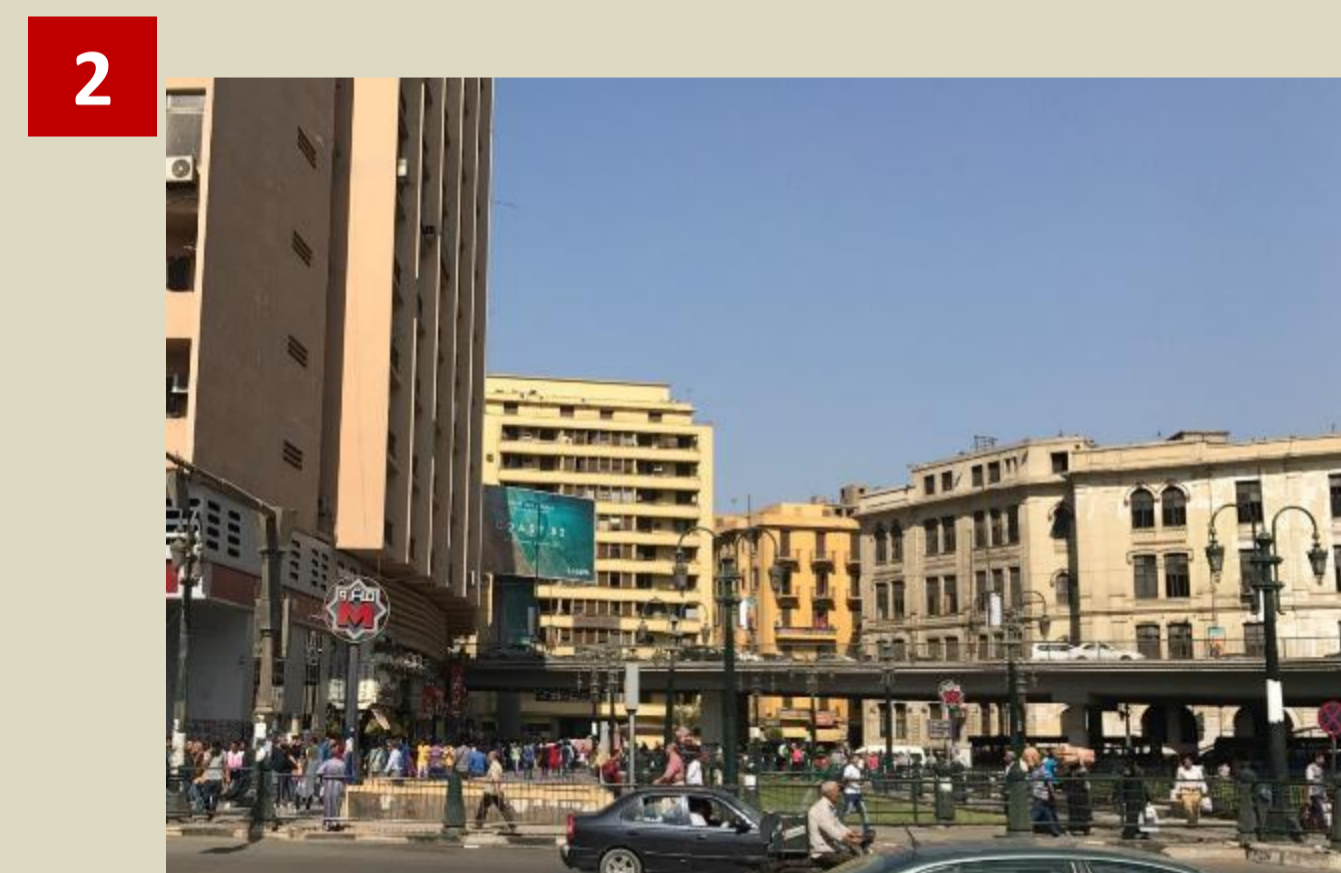
The square doesn't have a clear shape, it needs to be more defined

2017

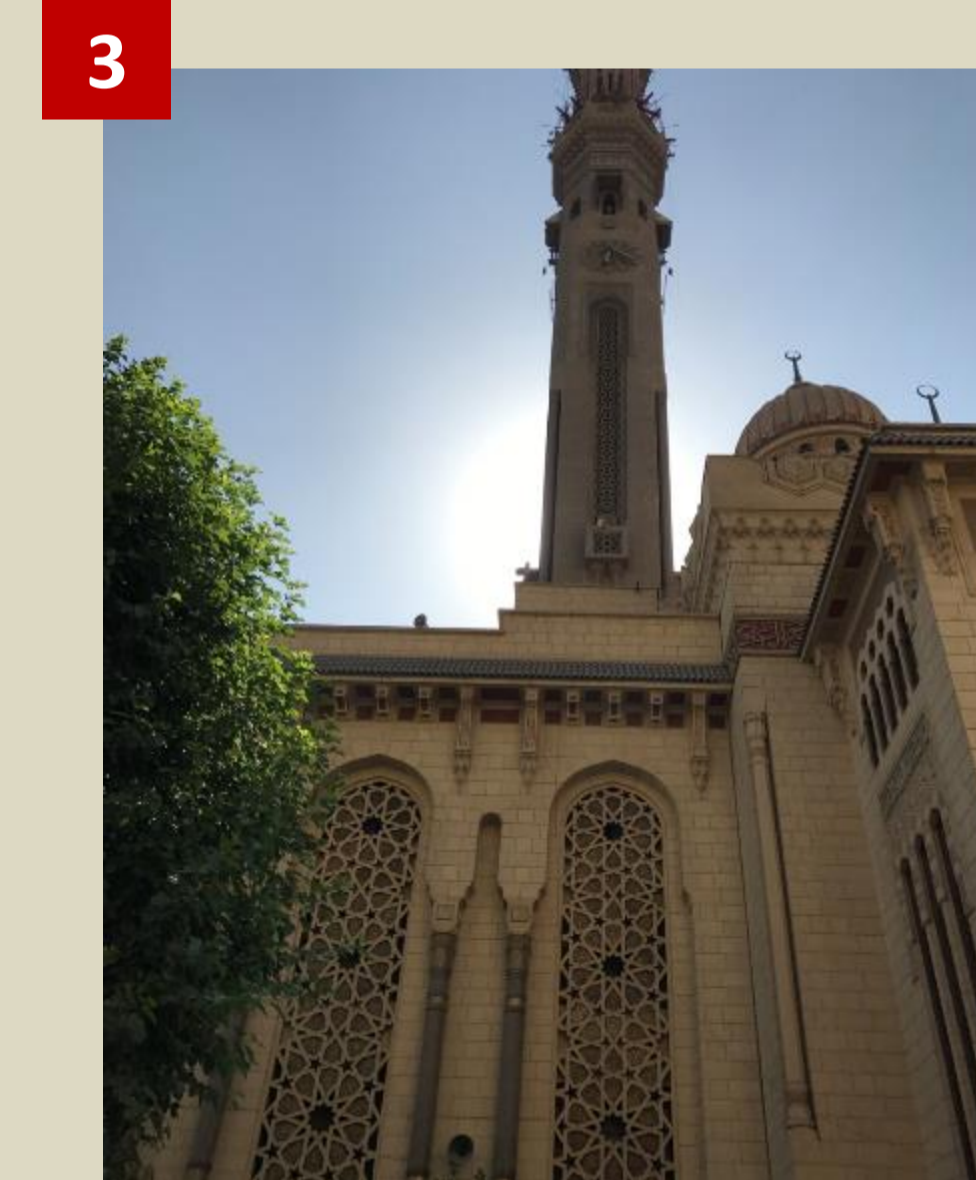
**Ramses Square**, One of Khedivial Cairo Squares, it includes different types of buildings and each is important: Misr Railway station, al Fateh Mosque, Water and Electricity Co it also contained one of the most important Bus stations in Cairo before it was moved to be called Ahmed Helmy Bus station, The square connects **3** important squares of Khedivial Cairo which are Al Tahrir Square, Abdel Moneam Riyadh Square, Opera Square, and connects Downtown – in general- with the suburbs of Misr al Gadedda, and Roxy, also one of most important streets -El Faggala- in Cairo branches from it.



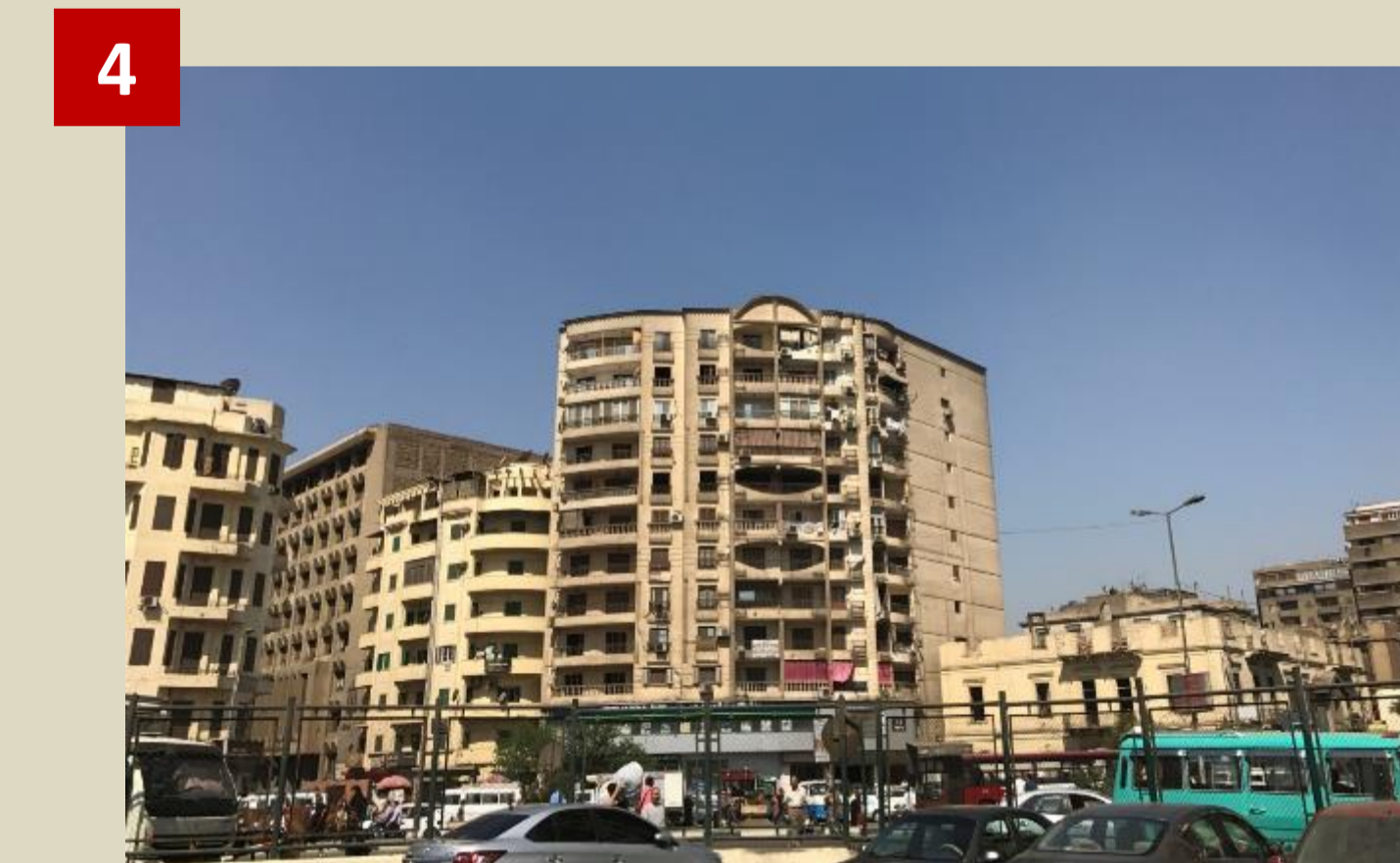
Egypt Railway station



Metro station



Alfath mosque

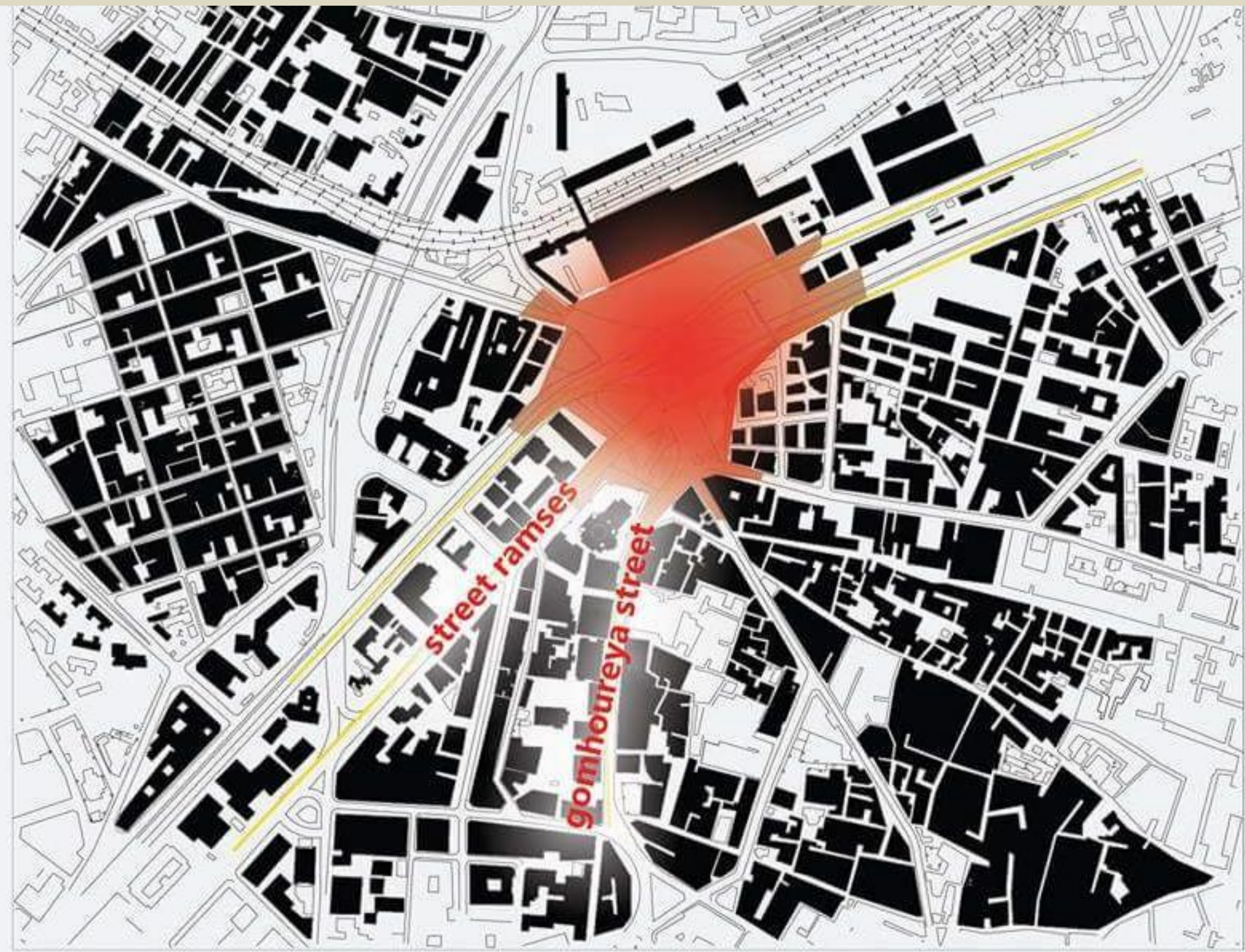


Transportation (bus stop)



Ramses long street  
 Branched from it Fagala street  
 Connects downtown with Heliopolis & Roxy.

# GENERAL SQUARE ANALYSIS



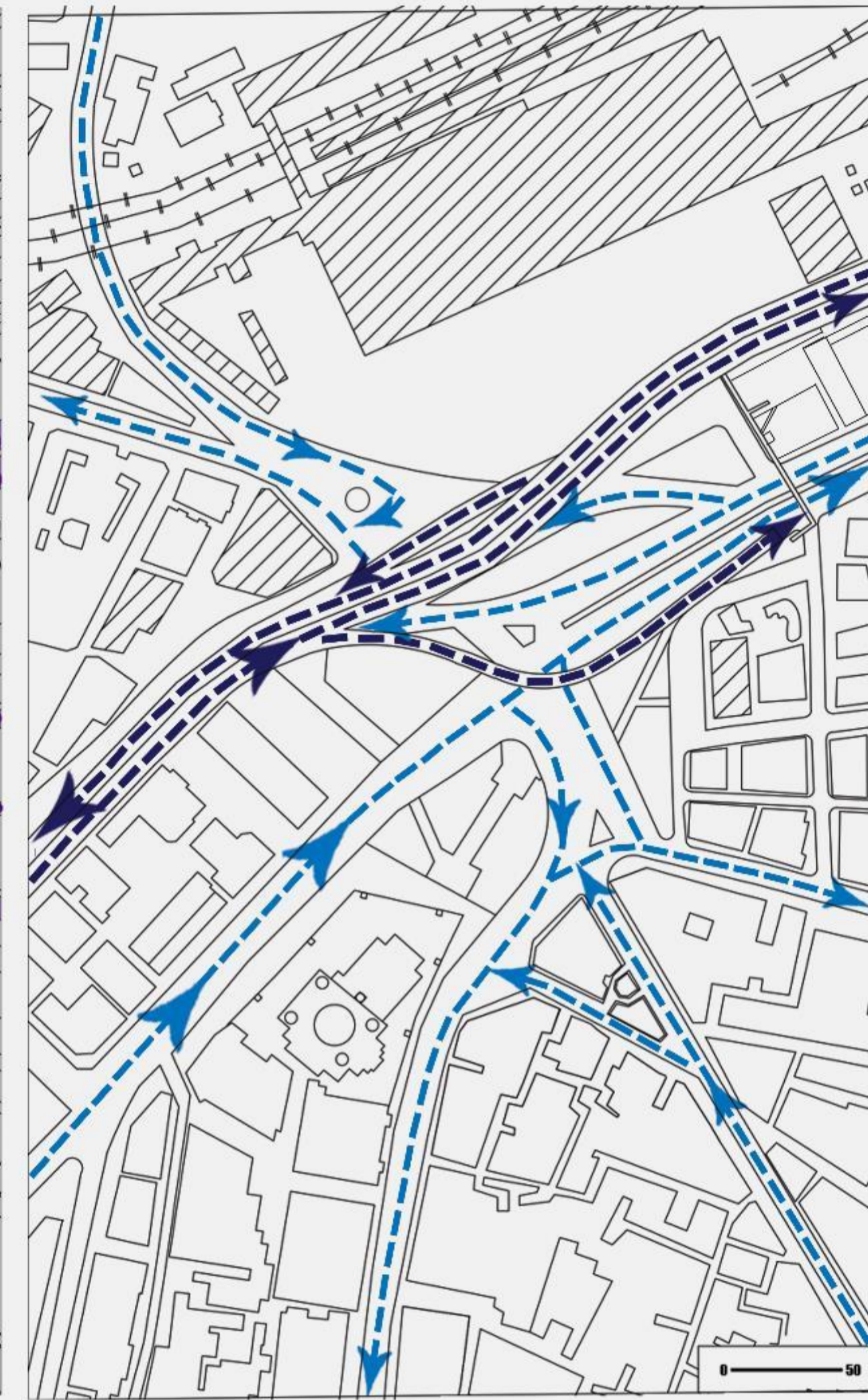
■ Ramsis Square  
■ Important streets

## Main axis & Streets:



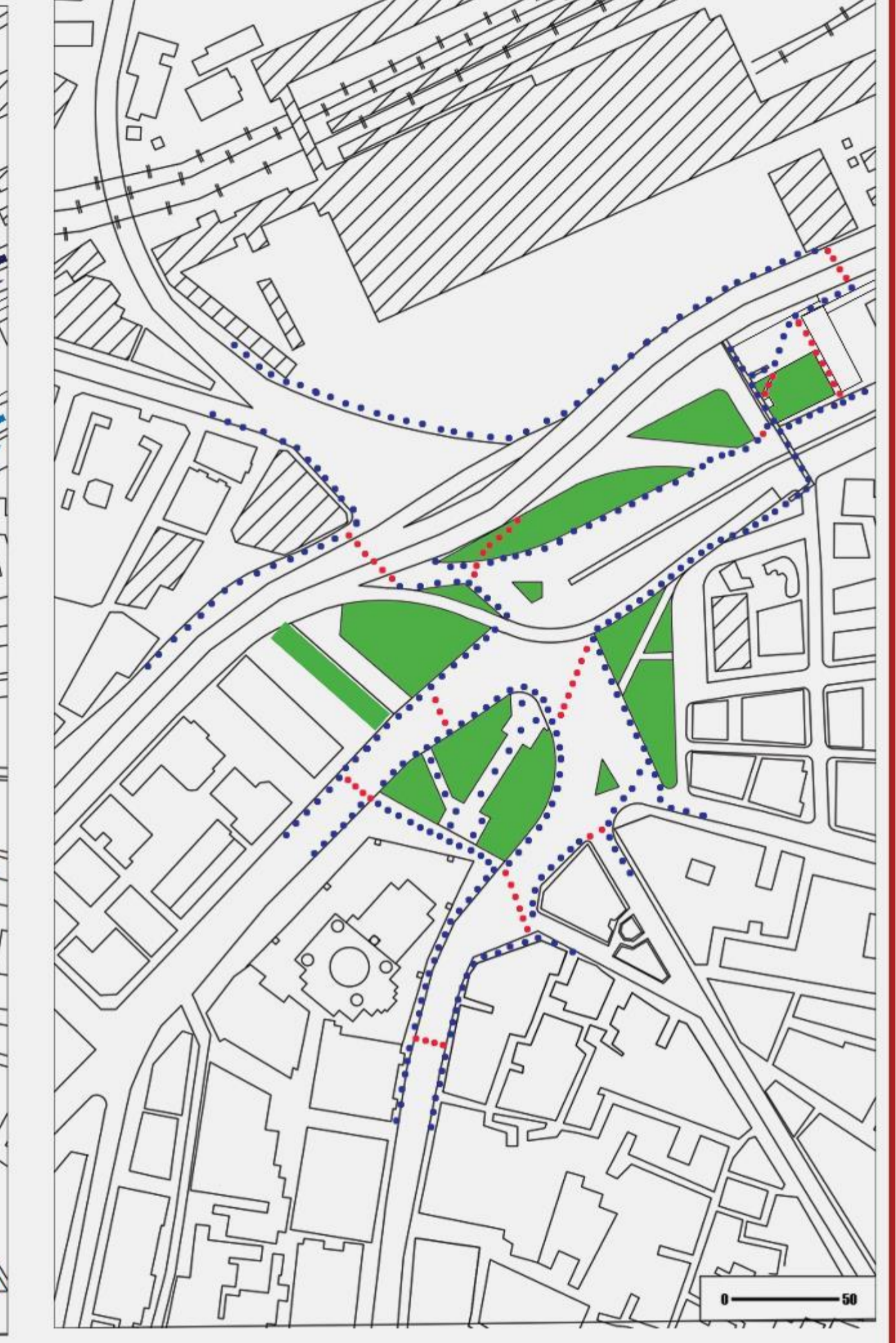
— Alleys    — Main roads  
— Sub-streets

## Car paths



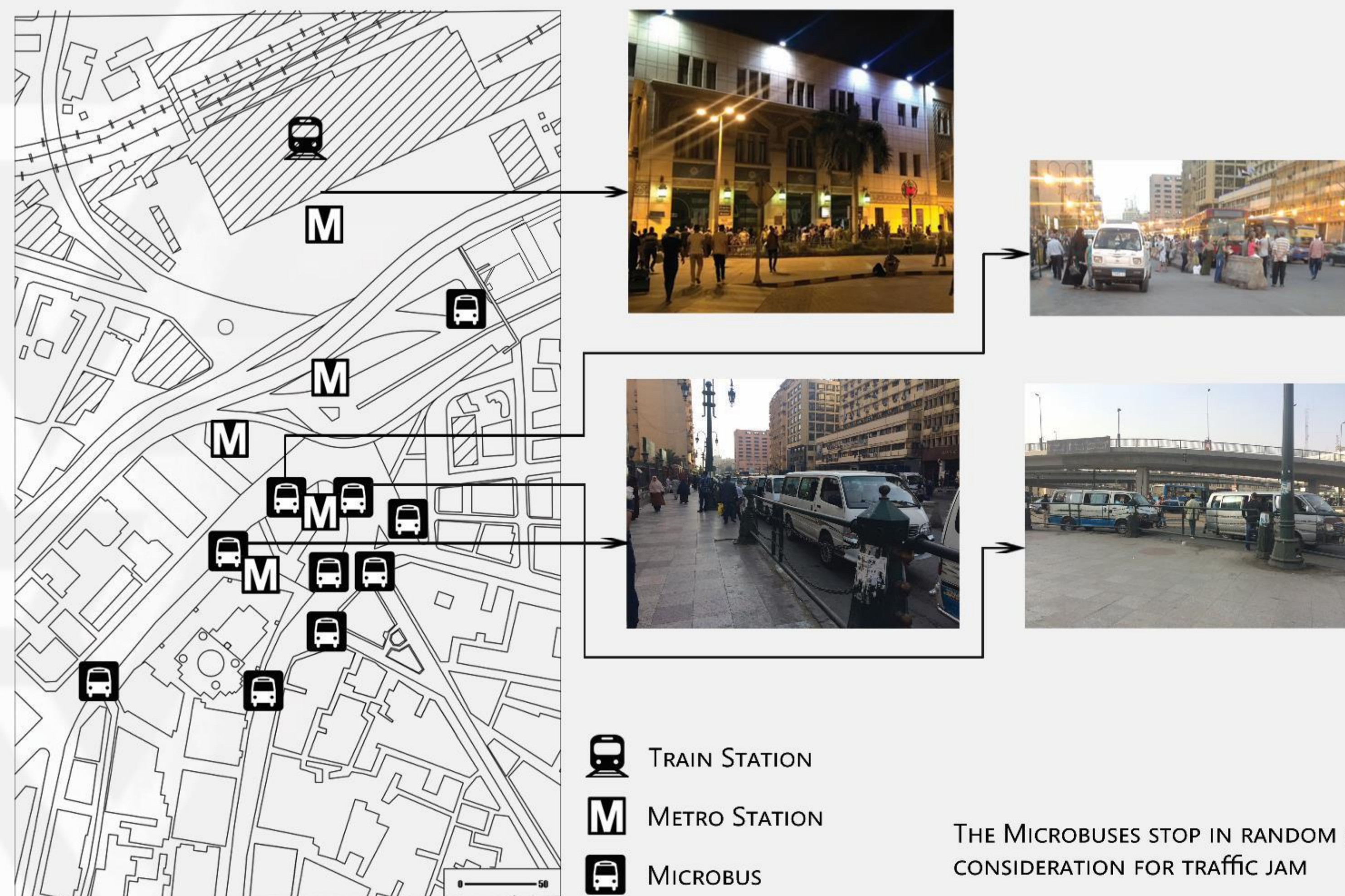
— Car paths in Streets  
— Car paths Over 6 October bridge

## People paths



People cross streets randomly and make shortcuts in green areas

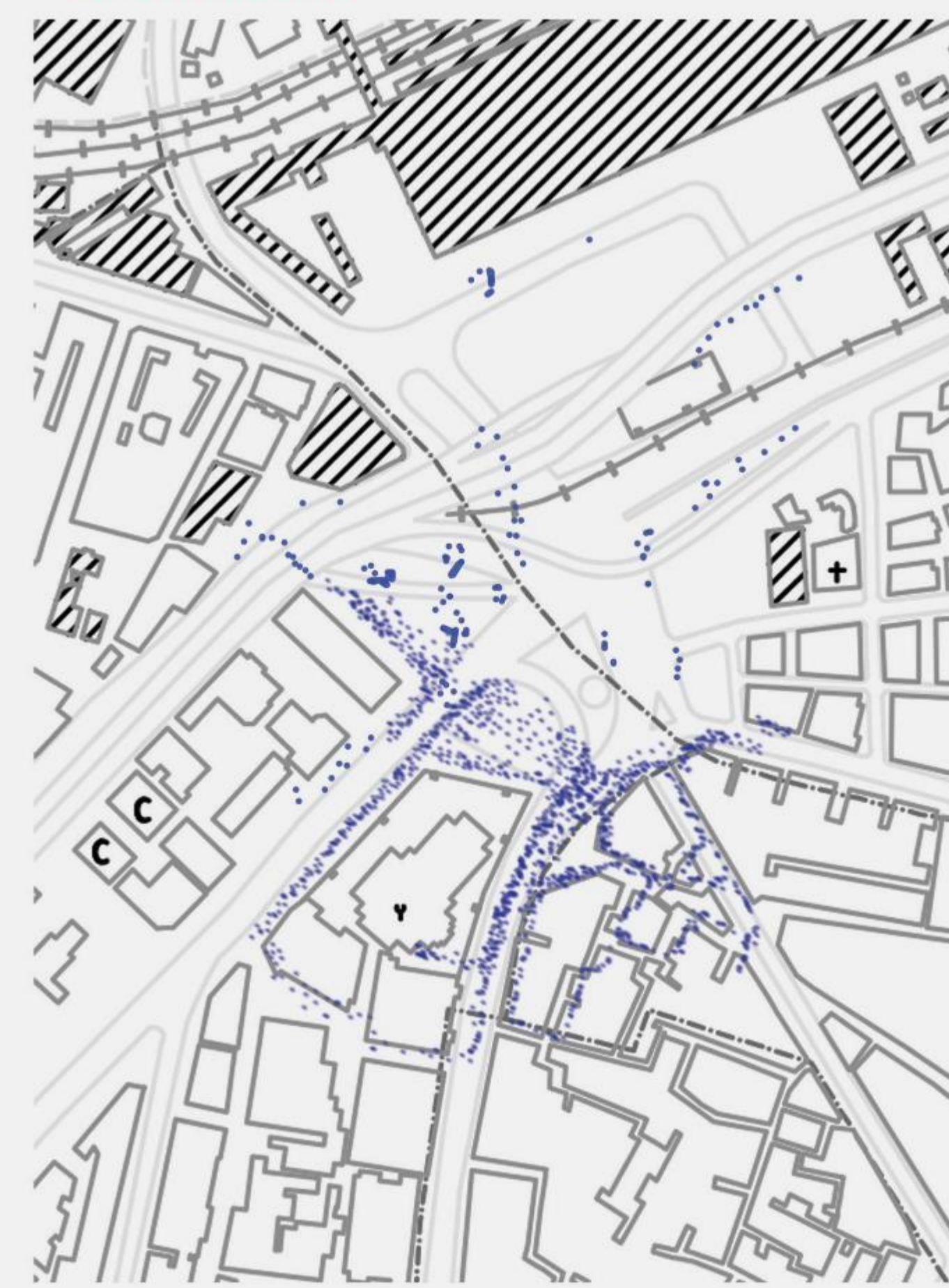
## TRANSPORTATION



T TRAIN STATION  
M METRO STATION  
B MICROBUS

THE MICROBUSES STOP IN RANDOM PLACES WITHOUT CONSIDERATION FOR TRAFFIC JAM

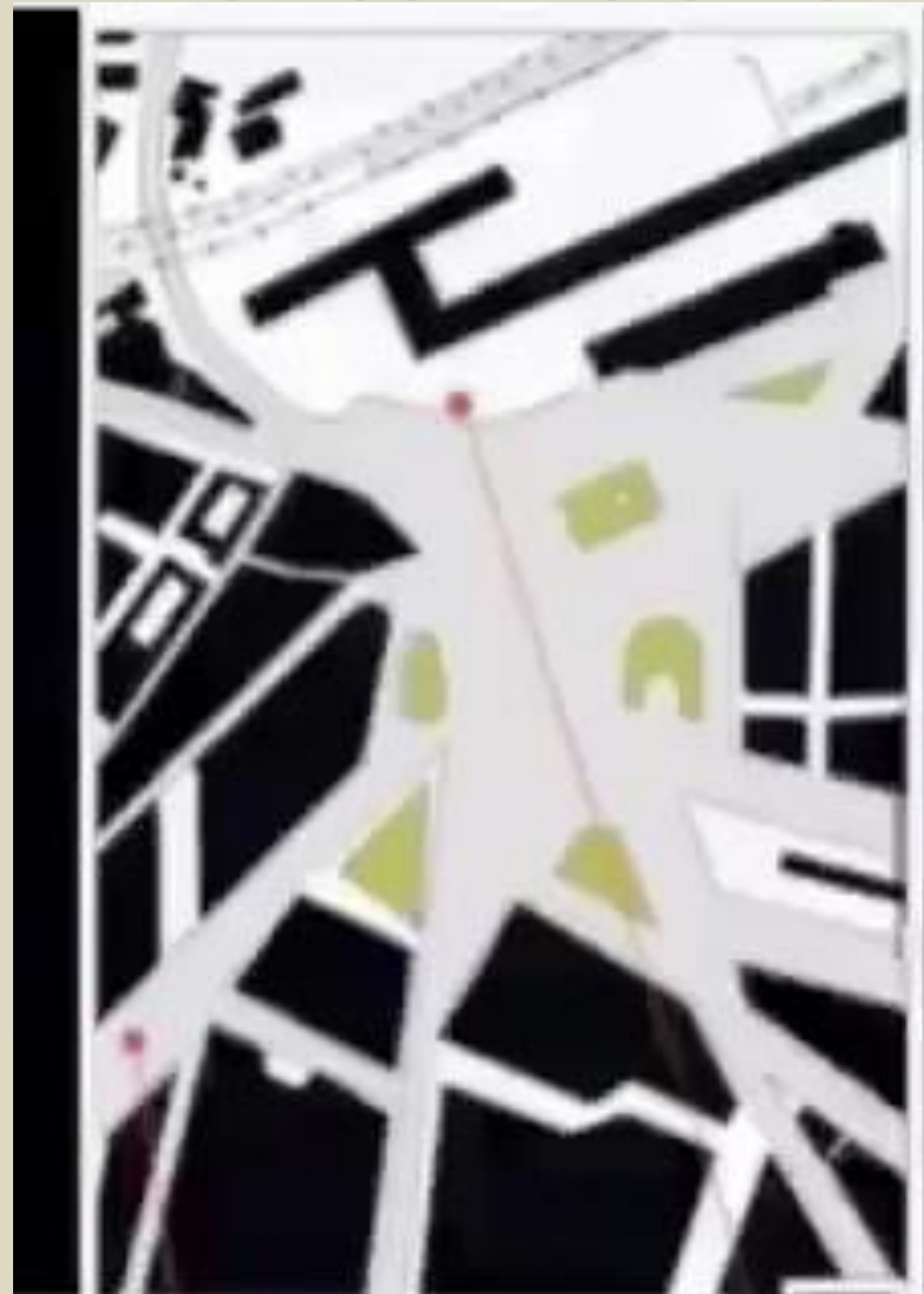
## Crowdness



7/5/2017  
17:00

# DEVELOPMENT & TRANSFORMATION OF THE CITY (GENERAL)

## • Urban fabric



### DEVELOPMENT

- Building fabric becoming more narrow than before.
- Sculpture exchange and removing affected urban spaces of the square.
- the bridge cuts the visual space and distorts the urban fabric and skyline.
- Green areas are less effective.

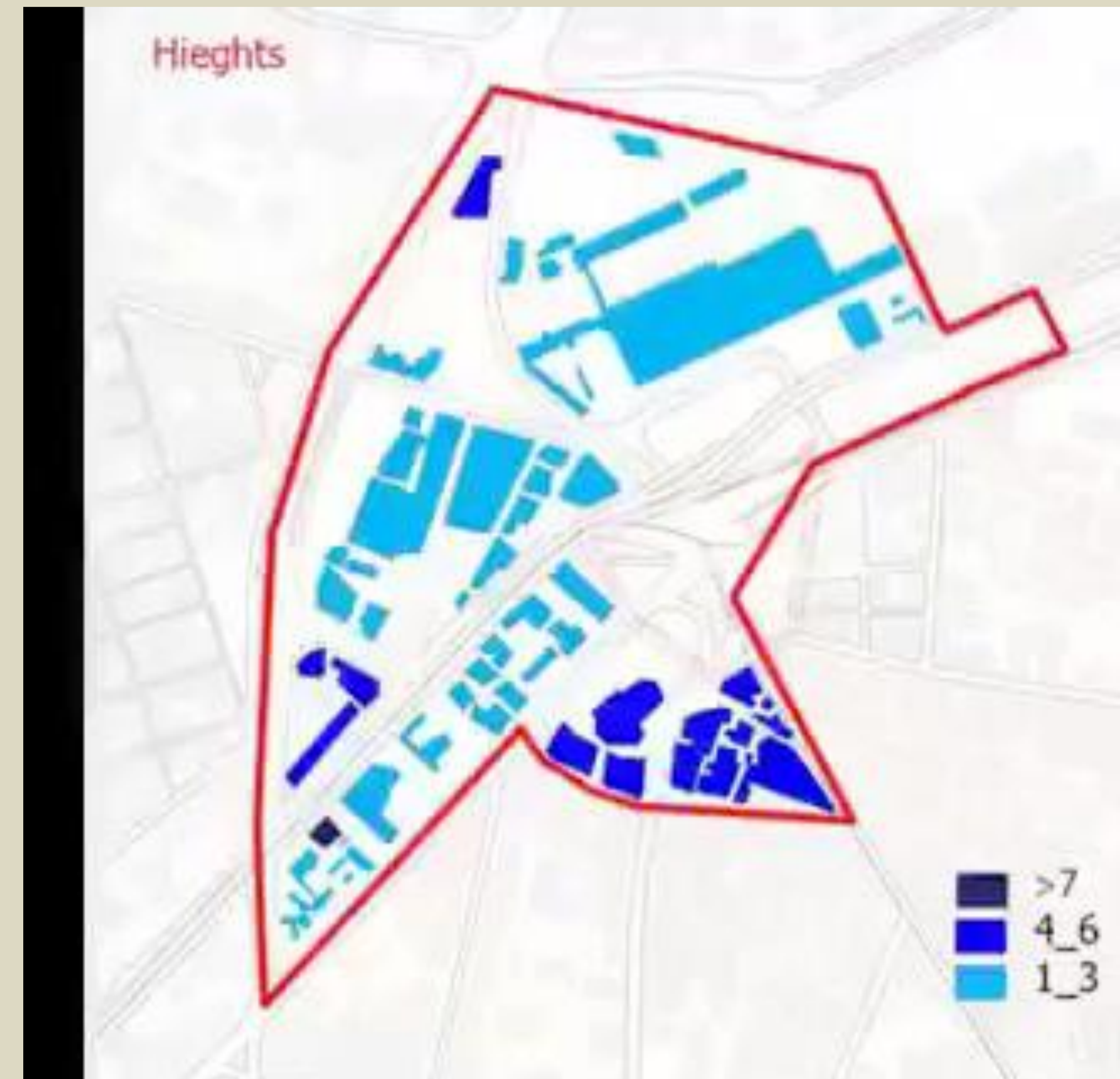
## • Land use



### FLASHBACK

- some of the Residential buildings became commercial towers
- Most buildings are mixed use.
- Expansion of the station made the Government take some decisions as transferring the bus stop area behind the station, making barriers and pedestrian bridge.
- Some new religious buildings appears and Governmental buildings.

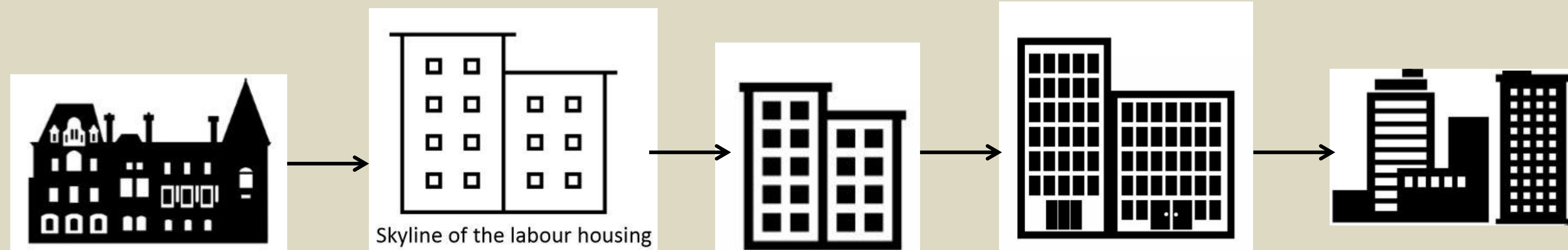
## • Heights and skyline



### DEVELOPMENT

- Building heights were up to 3 floors then towers to place.
- Skyline became distort after the presence of towers related to the old buildings.

Urbanization began to change downtown after the change of government and transformation from the royal system to the republican system, where a new type of architecture, which depends on the function, began in the first place



# SKY LINE & HEIGHTS

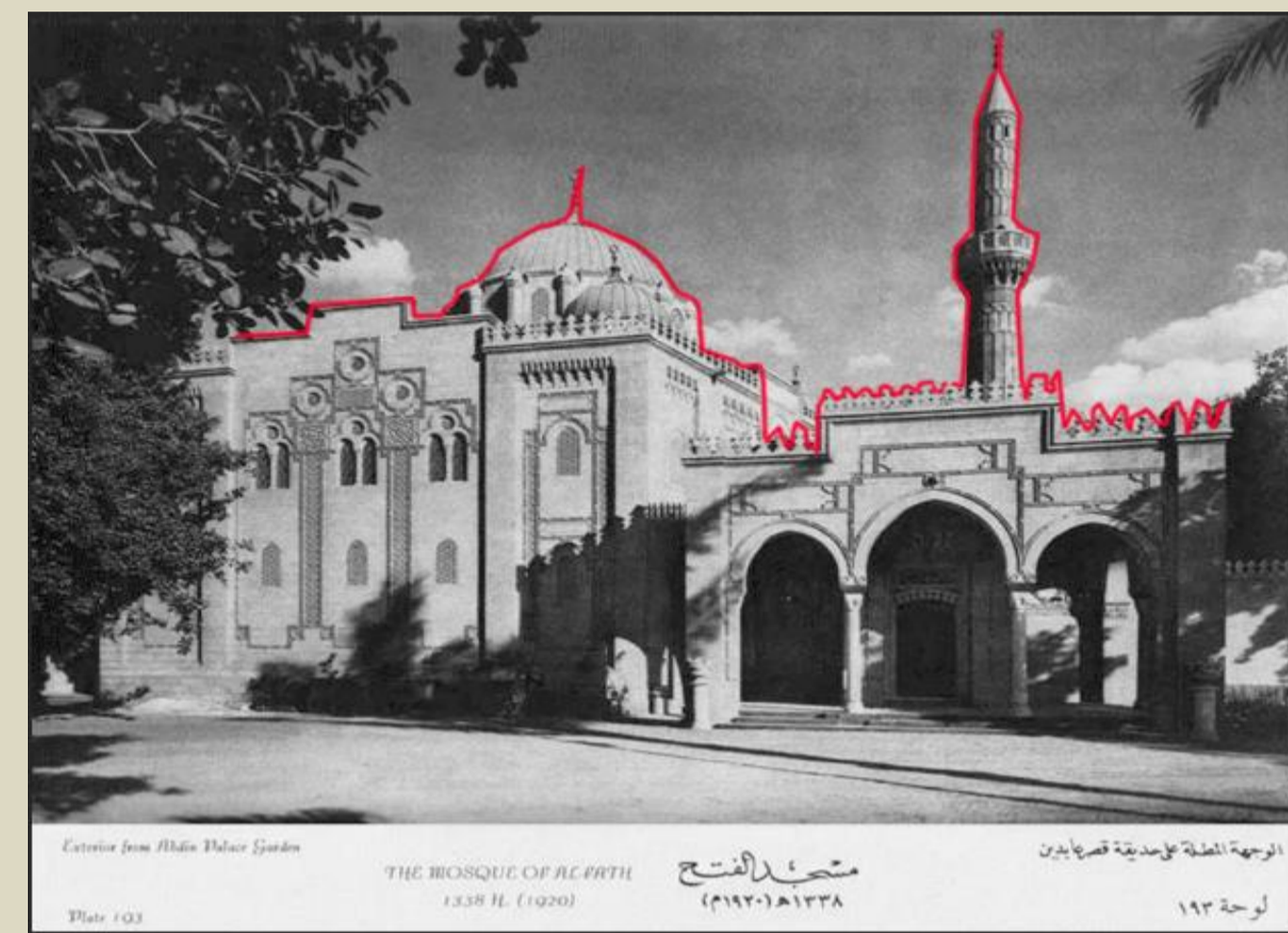
## Skyline

### GENERAL STUDY

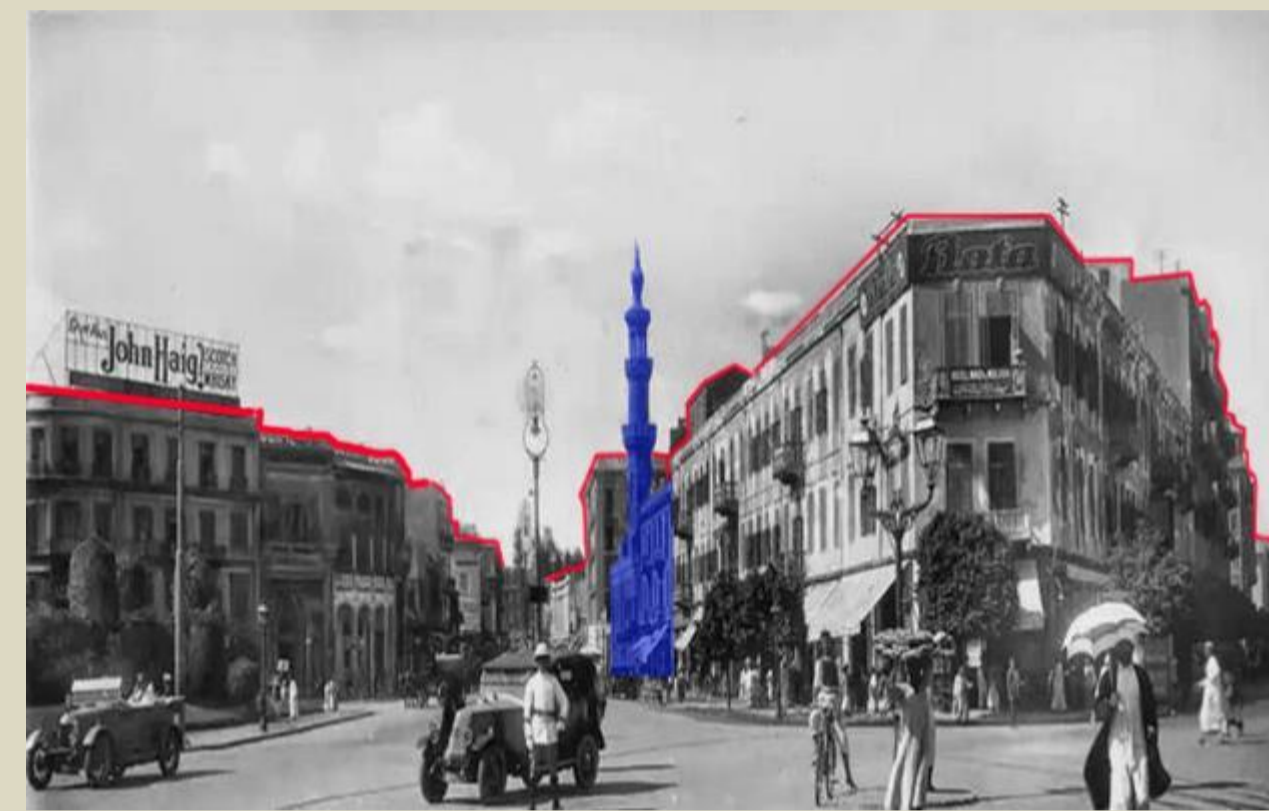
1900 → 1950 → 1970 → 1980 → 1990 → 2010 → NOW



1894



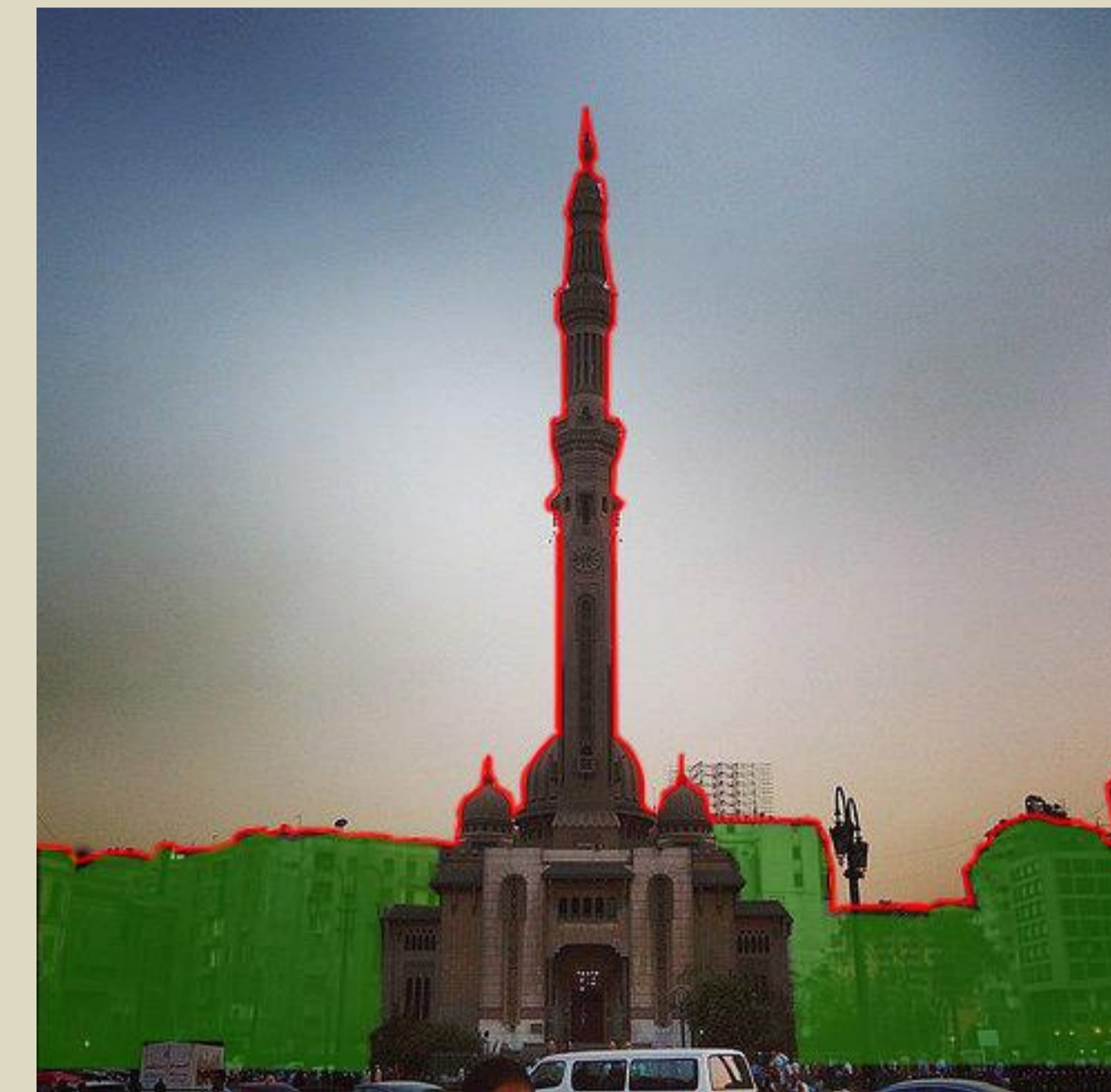
1920



Sabeil om Elamer  
MOHAMMED ALI  
1867



Sabeil om Elamer  
MOHAMMED ALI



The mosque was reconstructed  
by Mokawlen arab's company  
in MOBARAK's era 1992



2005



Ramses residential building  
1997

- SKYLINE IN THIS ZONE WAS AFFECTED BY POLITICAL ,SOCIAL AND ECONOMIC REASONS.
- HUMAN NEEDED HIGH RISE BUILDINGS FOR INVESTEMENT AND DENISTY OF POPULATION.
- THE LAND WAS EXPINCIVE AND COSTS A LOT SO THEY WERE FORCED TO EXTEND VERTICAL INSTEAD OF HORIZONTAL EXTENSIONS.